

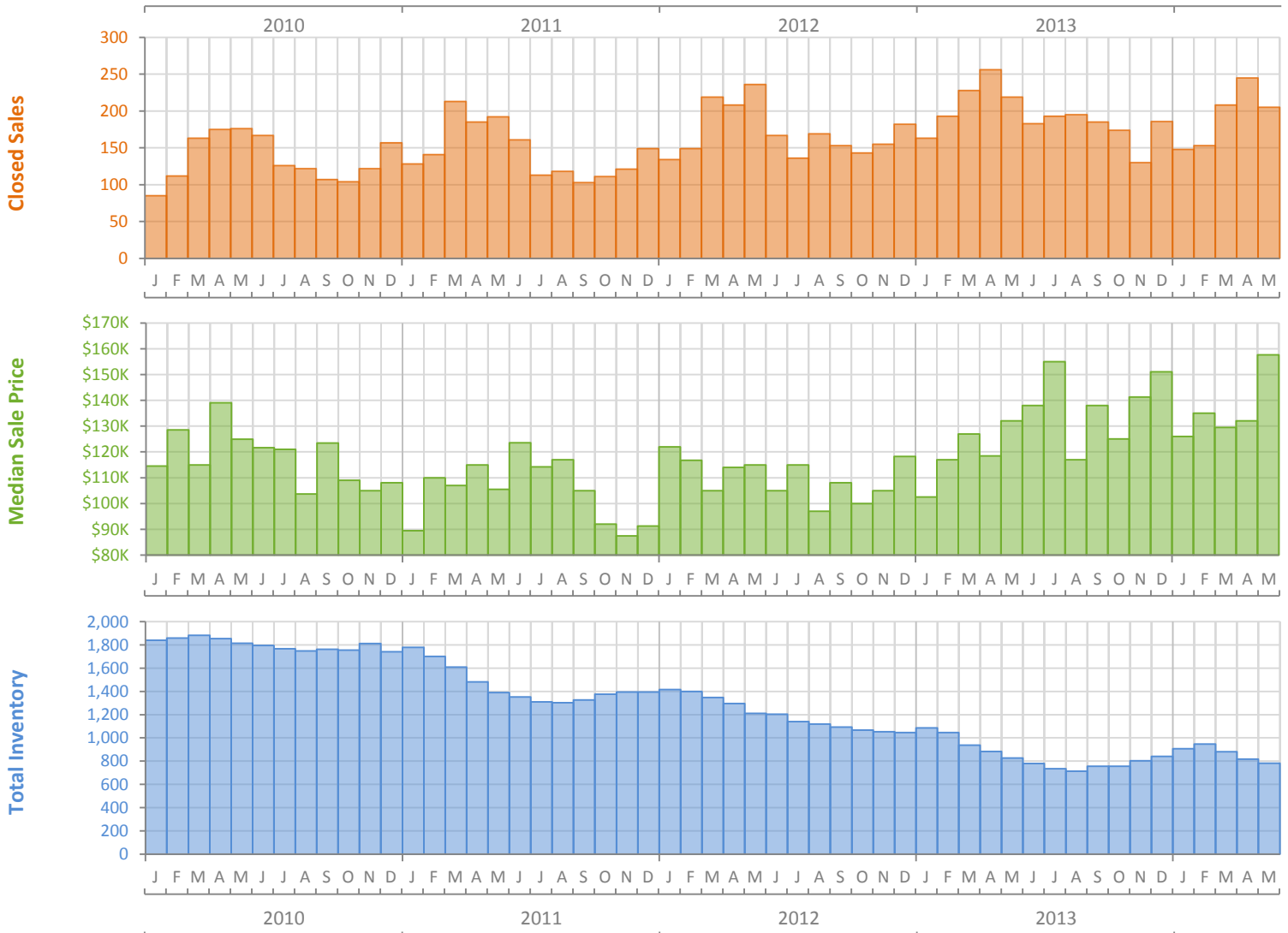
# Monthly Market Summary - May 2014

## Townhouses and Condos

### Manatee County



|  | May 2014  | May 2013  | Percent Change Year-over-Year |
|--|-----------|-----------|-------------------------------|
| Closed Sales                                 | 205       | 219       | -6.4%                         |
| Cash Sales                                   | 148       | 156       | -5.1%                         |
| New Pending Sales                            | 181       | 213       | -15.0%                        |
| New Listings                                 | 236       | 239       | -1.3%                         |
| Median Sale Price                            | \$157,600 | \$132,000 | 19.4%                         |
| Average Sale Price                           | \$201,660 | \$169,468 | 19.0%                         |
| Median Days on Market                        | 50        | 53        | -5.7%                         |
| Avg. Percent of Original List Price Received | 92.8%     | 93.2%     | -0.4%                         |
| Pending Inventory                            | 280       | 350       | -20.0%                        |
| Inventory (Active Listings)                  | 781       | 826       | -5.4%                         |
| Months Supply of Inventory                   | 4.3       | 4.6       | -7.2%                         |



# Monthly Distressed Market - May 2014

## Townhouses and Condos

### Manatee County



|                 |                   | May 2014  | May 2013  | Percent Change Year-over-Year |
|-----------------|-------------------|-----------|-----------|-------------------------------|
| Traditional     | Closed Sales      | 181       | 173       | 4.6%                          |
|                 | Median Sale Price | \$170,000 | \$145,000 | 17.2%                         |
| Foreclosure/REO | Closed Sales      | 19        | 32        | -40.6%                        |
|                 | Median Sale Price | \$67,500  | \$71,000  | -4.9%                         |
| Short Sale      | Closed Sales      | 5         | 14        | -64.3%                        |
|                 | Median Sale Price | \$92,500  | \$102,500 | -9.8%                         |

