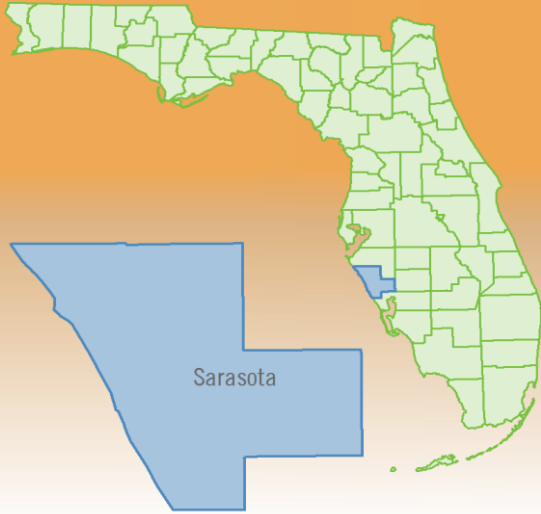


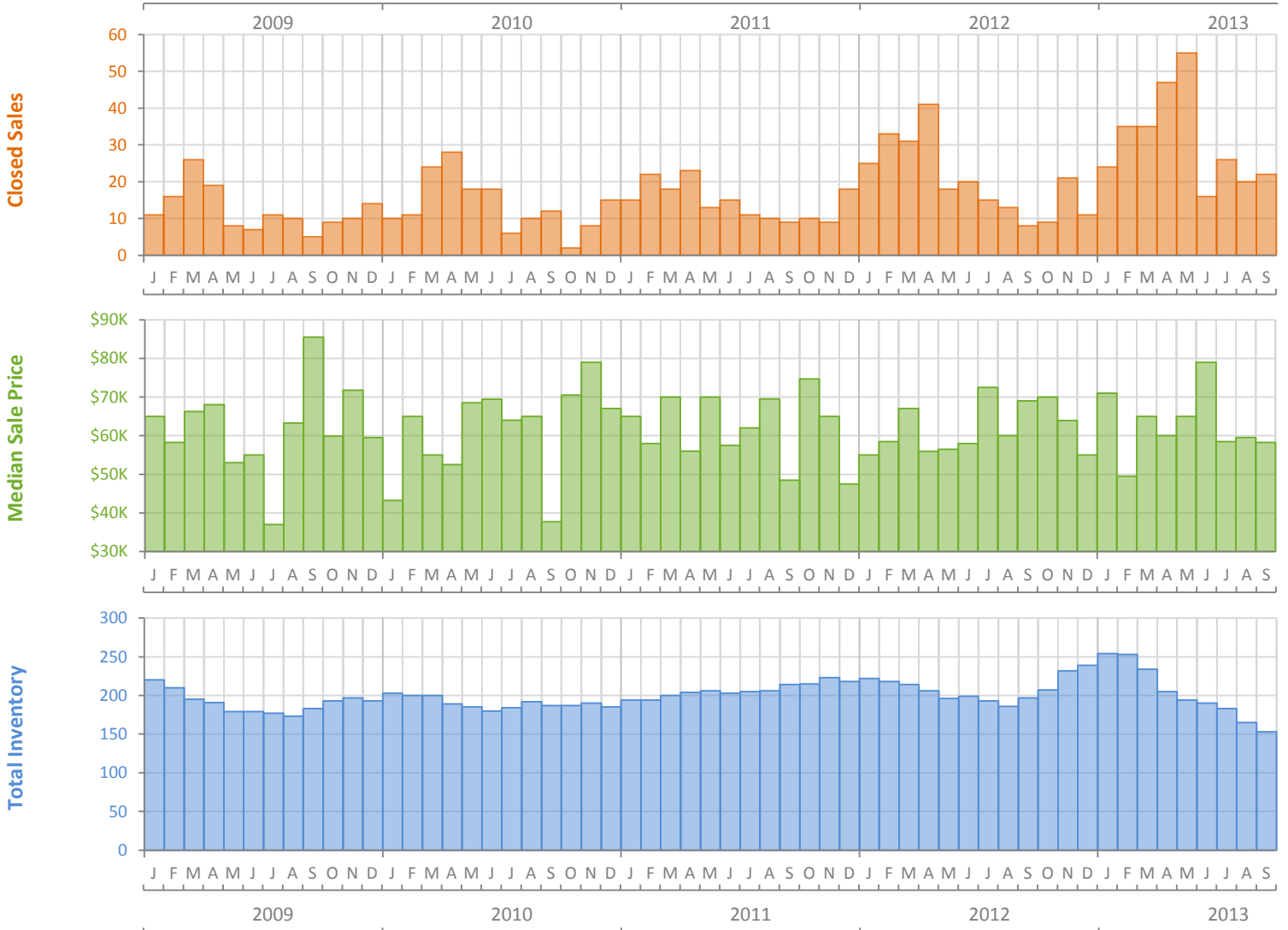
Monthly Market Summary - September 2013

Manufactured Homes

Sarasota County



| | September 2013 | September 2012 | Percent Change Year-over-Year |
|--|----------------|----------------|-------------------------------|
| Closed Sales | 22 | 8 | 175.0% |
| Cash Sales | 20 | 7 | 185.7% |
| New Pending Sales | 19 | 7 | 171.4% |
| New Listings | 18 | 26 | -30.8% |
| Median Sale Price | \$58,250 | \$69,000 | -15.6% |
| Average Sale Price | \$63,200 | \$69,500 | -9.1% |
| Median Days on Market | 118 | 156 | -24.4% |
| Avg. Percent of Original List Price Received | 84.9% | 83.6% | 1.6% |
| Pending Inventory | 19 | (No Data) | N/A |
| Inventory (Active Listings) | 153 | 197 | -22.3% |
| Months Supply of Inventory | 5.7 | 9.8 | -41.7% |

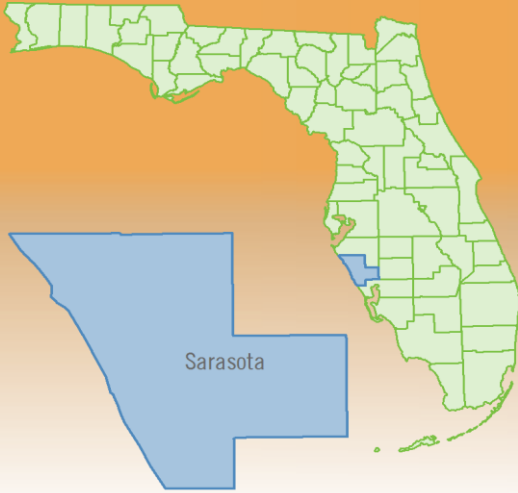


Produced by Florida REALTORS® with data provided by Florida's multiple listing services. Statistics for each month compiled from MLS feeds on the 15th day of the following month. Data released on Monday, October 21, 2013. Next data release is Wednesday, November 20, 2013.

Monthly Distressed Market - September 2013

Manufactured Homes

Sarasota County



| | | September 2013 | September 2012 | Percent Change Year-over-Year |
|-----------------|-------------------|----------------|----------------|-------------------------------|
| Traditional | Closed Sales | 21 | 8 | 162.5% |
| | Median Sale Price | \$58,500 | \$69,000 | -15.2% |
| Foreclosure/REO | Closed Sales | 0 | 0 | N/A |
| | Median Sale Price | (No Sales) | (No Sales) | N/A |
| Short Sale | Closed Sales | 1 | 0 | N/A |
| | Median Sale Price | \$55,000 | (No Sales) | N/A |

