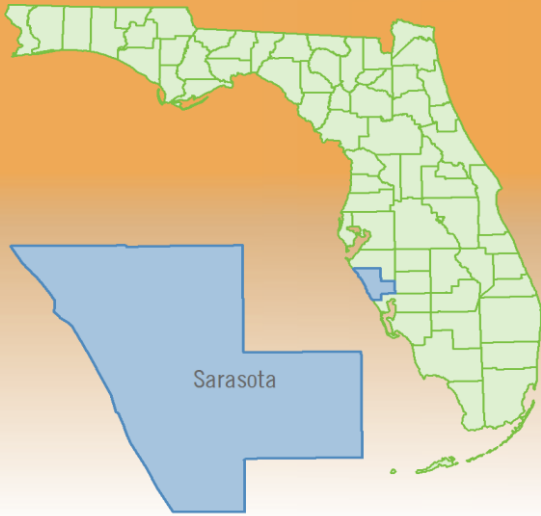


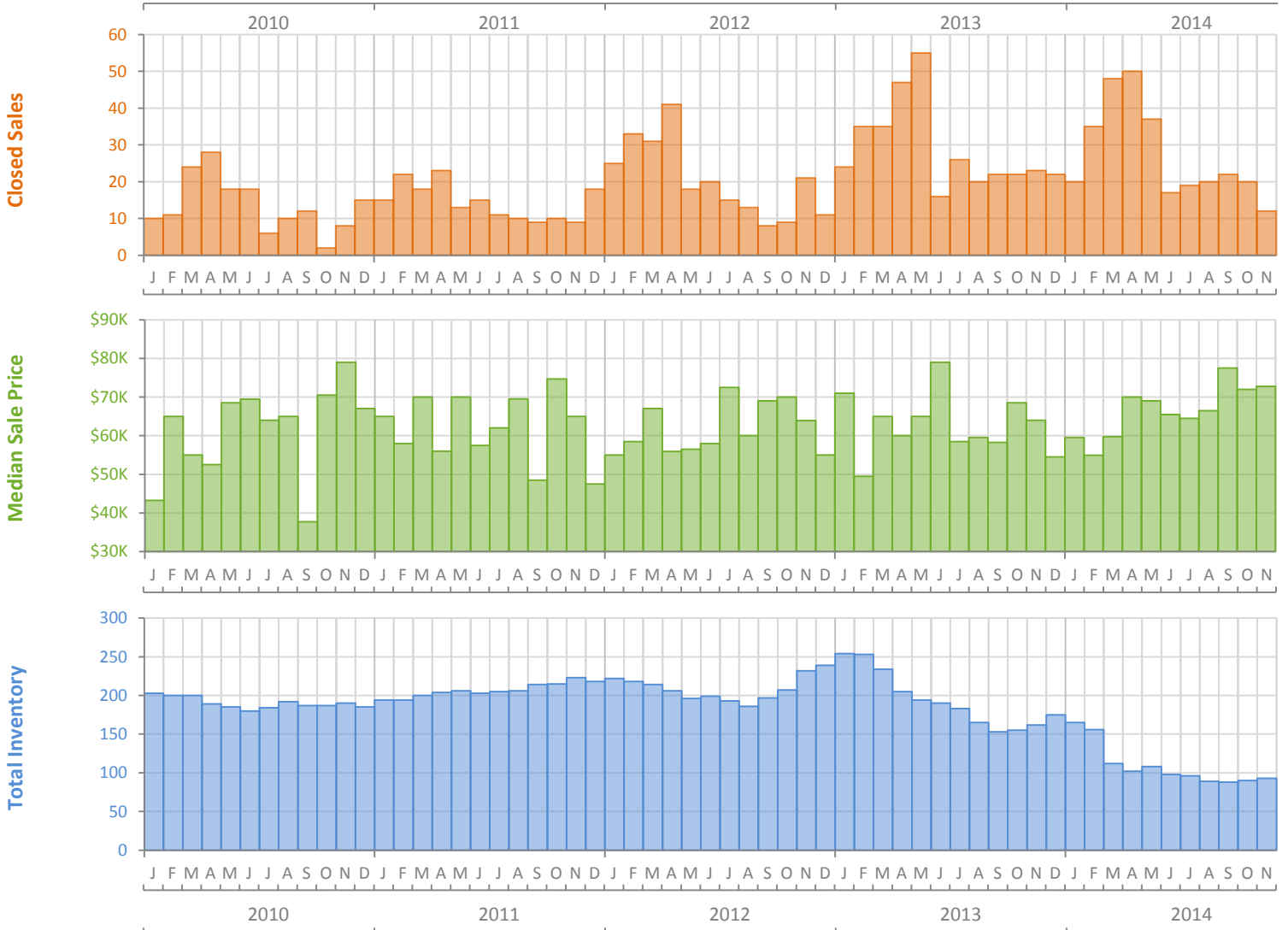
Monthly Market Summary - November 2014

Manufactured Homes

Sarasota County



| | November 2014 | November 2013 | Percent Change Year-over-Year |
|--|---------------|---------------|-------------------------------|
| Closed Sales | 12 | 23 | -47.8% |
| Cash Sales | 12 | 22 | -45.5% |
| New Pending Sales | 20 | 28 | -28.6% |
| New Listings | 30 | 46 | -34.8% |
| Median Sale Price | \$72,750 | \$64,000 | 13.7% |
| Average Sale Price | \$74,292 | \$60,176 | 23.5% |
| Median Days on Market | 30 | 98 | -69.4% |
| Avg. Percent of Original List Price Received | 92.2% | 86.1% | 7.1% |
| Pending Inventory | 26 | 28 | -7.1% |
| Inventory (Active Listings) | 93 | 162 | -42.6% |
| Months Supply of Inventory | 3.5 | 5.8 | -40.1% |

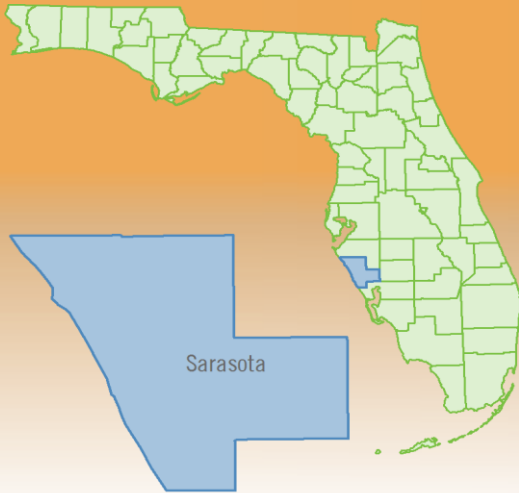


Produced by Florida REALTORS® with data provided by Florida's multiple listing services. Statistics for each month compiled from MLS feeds on the 15th day of the following month. Data released on Monday, December 22, 2014. Next data release is Friday, January 23, 2015.

Monthly Distressed Market - November 2014

Manufactured Homes

Sarasota County



| | | November 2014 | November 2013 | Percent Change Year-over-Year |
|-----------------|-------------------|---------------|---------------|-------------------------------|
| Traditional | Closed Sales | 12 | 23 | -47.8% |
| | Median Sale Price | \$72,750 | \$64,000 | 13.7% |
| Foreclosure/REO | Closed Sales | 0 | 0 | N/A |
| | Median Sale Price | (No Sales) | (No Sales) | N/A |
| Short Sale | Closed Sales | 0 | 0 | N/A |
| | Median Sale Price | (No Sales) | (No Sales) | N/A |

