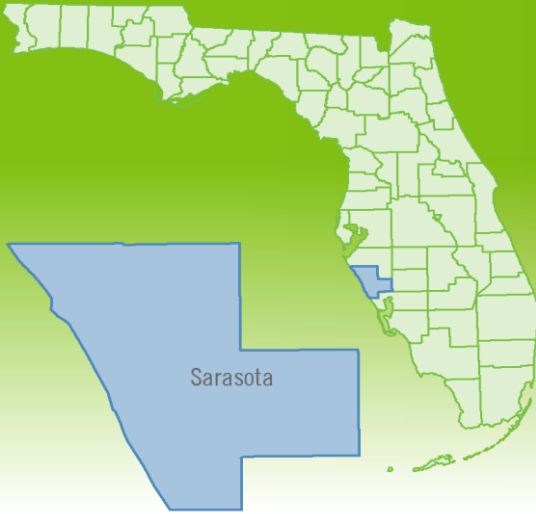


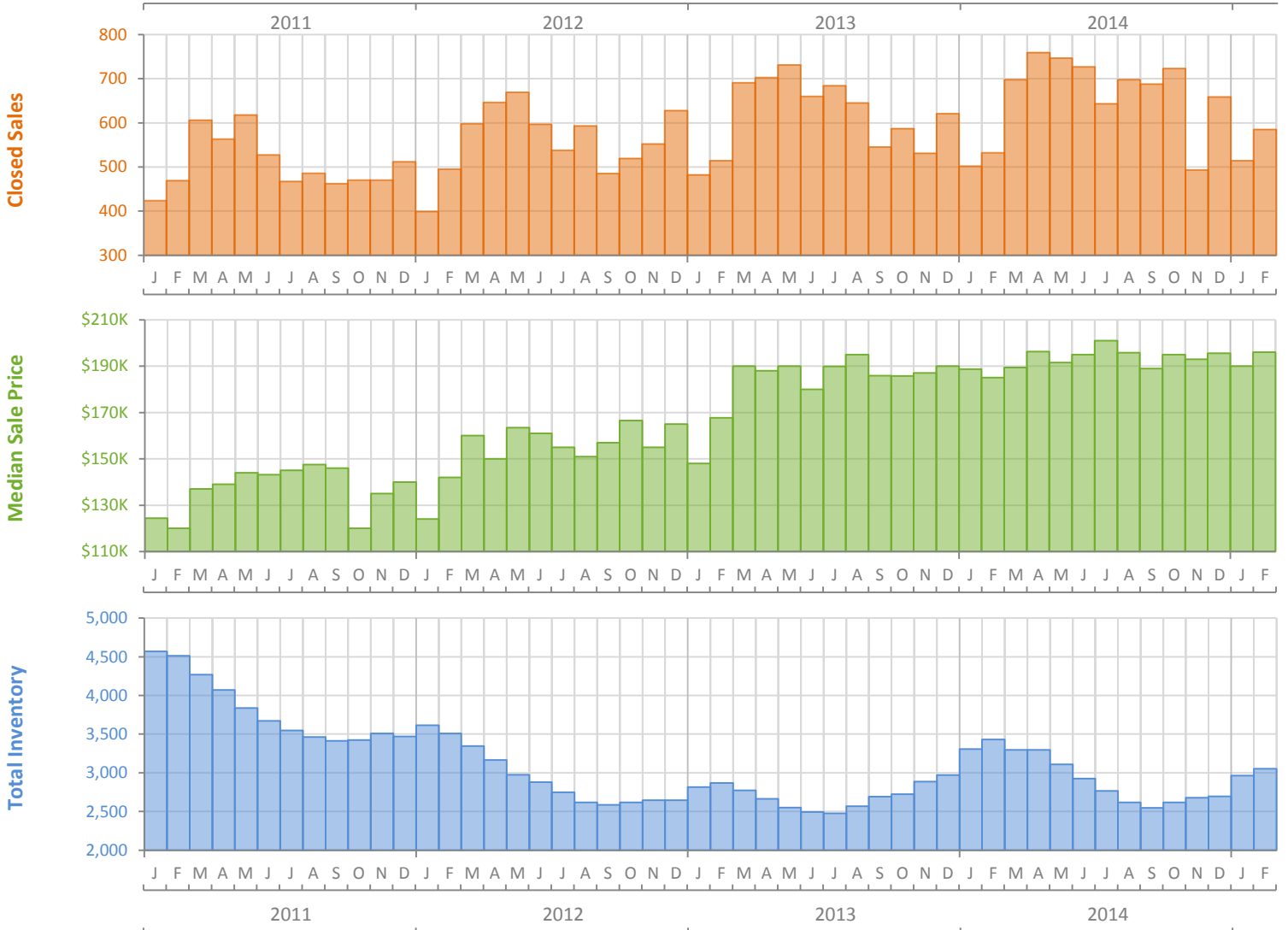
# Monthly Market Summary - February 2015

## Single Family Homes

### Sarasota County



|  | February 2015 | February 2014 | Percent Change Year-over-Year |
|--|---------------|---------------|-------------------------------|
| Closed Sales                                 | 585           | 532           | 10.0%                         |
| Cash Sales                                   | 297           | 319           | -6.9%                         |
| New Pending Sales                            | 663           | 695           | -4.6%                         |
| New Listings                                 | 985           | 988           | -0.3%                         |
| Median Sale Price                            | \$196,000     | \$185,000     | 5.9%                          |
| Average Sale Price                           | \$296,424     | \$288,575     | 2.7%                          |
| Median Days on Market                        | 49            | 58            | -15.5%                        |
| Avg. Percent of Original List Price Received | 93.3%         | 92.3%         | 1.1%                          |
| Pending Inventory                            | 1,052         | 1,127         | -6.7%                         |
| Inventory (Active Listings)                  | 3,052         | 3,430         | -11.0%                        |
| Months Supply of Inventory                   | 4.6           | 5.5           | -16.7%                        |

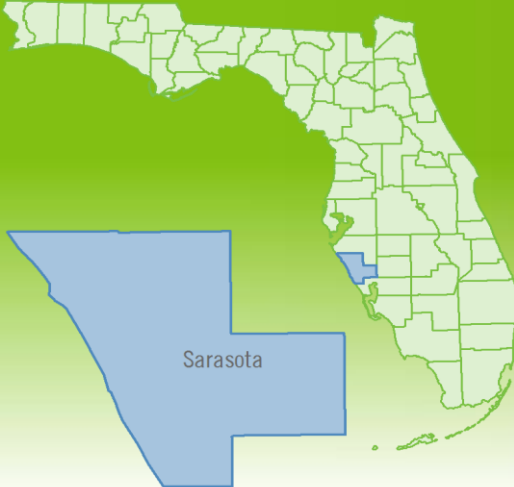


Produced by Florida REALTORS® with data provided by Florida's multiple listing services. Statistics for each month compiled from MLS feeds on the 15th day of the following month. Data released on Monday, March 23, 2015. Next data release is Wednesday, April 22, 2015.

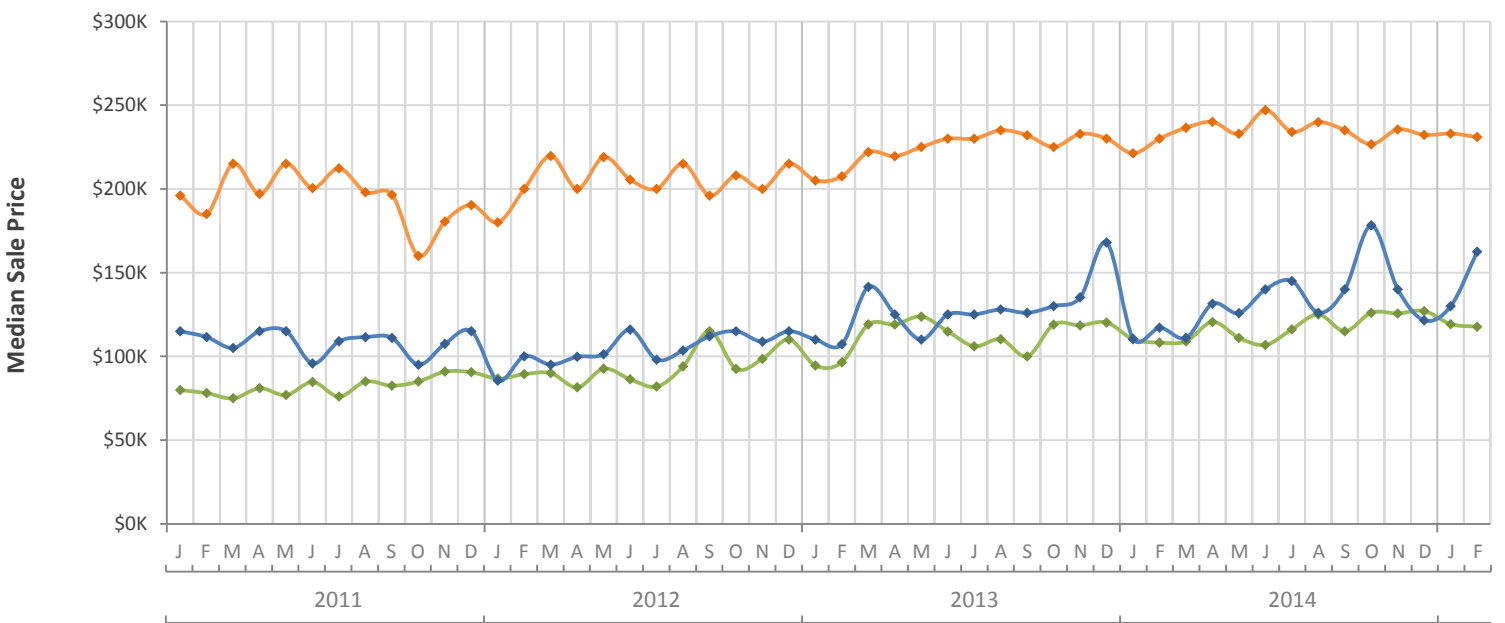
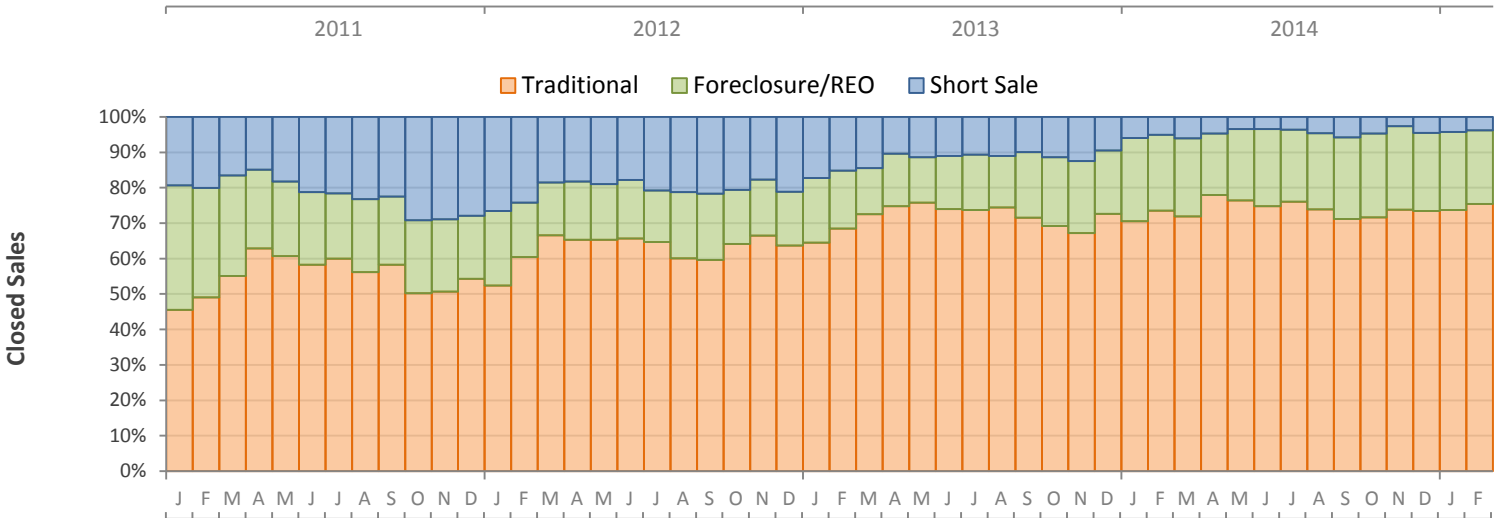
# Monthly Distressed Market - February 2015

## Single Family Homes

### Sarasota County



|                 |                   | February 2015 | February 2014 | Percent Change Year-over-Year |
|-----------------|-------------------|---------------|---------------|-------------------------------|
| Traditional     | Closed Sales      | 441           | 391           | 12.8%                         |
|                 | Median Sale Price | \$231,000     | \$230,000     | 0.4%                          |
| Foreclosure/REO | Closed Sales      | 122           | 114           | 7.0%                          |
|                 | Median Sale Price | \$117,650     | \$108,200     | 8.7%                          |
| Short Sale      | Closed Sales      | 22            | 27            | -18.5%                        |
|                 | Median Sale Price | \$162,500     | \$117,100     | 38.8%                         |



Produced by Florida REALTORS® with data provided by Florida's multiple listing services. Statistics for each month compiled from MLS feeds on the 15th day of the following month. Data released on Monday, March 23, 2015. Next data release is Wednesday, April 22, 2015.