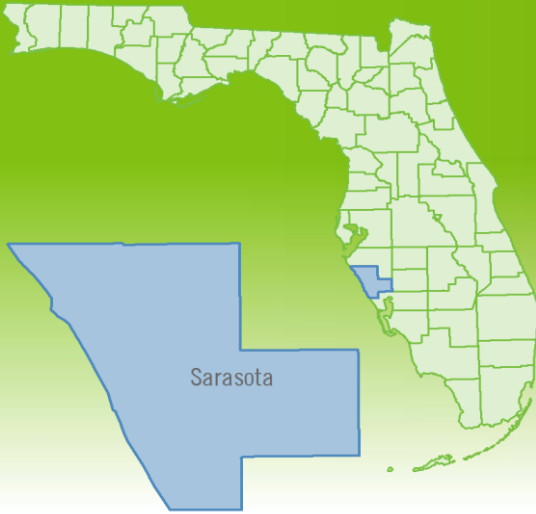


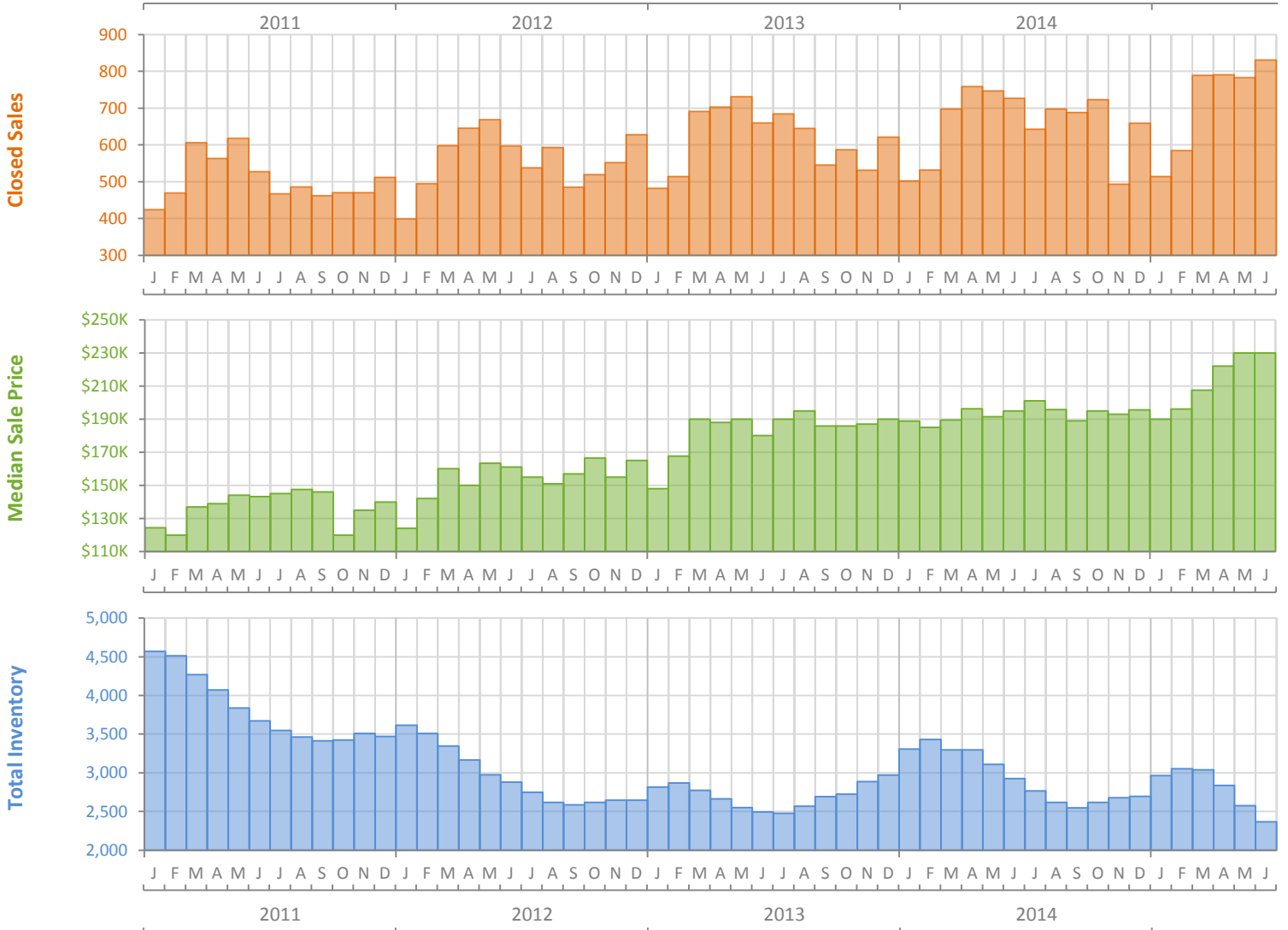
# Monthly Market Summary - June 2015

## Single Family Homes

### Sarasota County



	June 2015	June 2014	Percent Change Year-over-Year
Closed Sales	831	727	14.3%
Cash Sales	385	391	-1.5%
New Pending Sales	657	627	4.8%
New Listings	778	772	0.8%
Median Sale Price	\$230,000	\$195,000	17.9%
Average Sale Price	\$326,134	\$310,929	4.9%
Median Days on Market	45	66	-31.8%
Avg. Percent of Original List Price Received	94.5%	91.9%	2.8%
Pending Inventory	1,076	1,079	-0.3%
Inventory (Active Listings)	2,366	2,927	-19.2%
Months Supply of Inventory	3.5	4.6	-25.3%

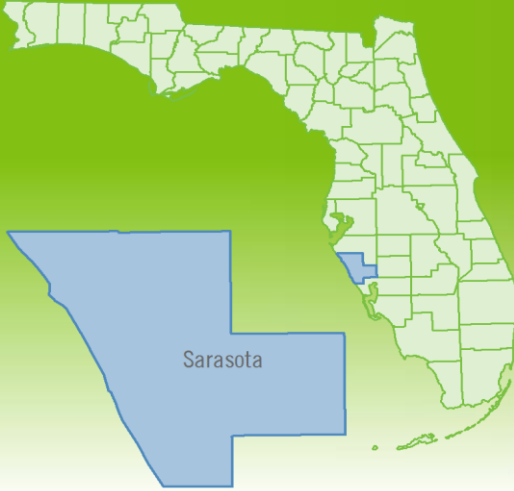


Produced by Florida REALTORS® with data provided by Florida's multiple listing services. Statistics for each month compiled from MLS feeds on the 15th day of the following month. Data released on Wednesday, July 22, 2015. Next data release is Thursday, August 20, 2015.

# Monthly Distressed Market - June 2015

## Single Family Homes

### Sarasota County



		June 2015	June 2014	Percent Change Year-over-Year
Traditional	Closed Sales	702	544	29.0%
	Median Sale Price	\$260,000	\$247,000	5.3%
Foreclosure/REO	Closed Sales	106	158	-32.9%
	Median Sale Price	\$143,000	\$106,814	33.9%
Short Sale	Closed Sales	23	25	-8.0%
	Median Sale Price	\$159,000	\$140,000	13.6%

